

SLINGSBY

- Journey In Wonder -

World Premiere Season

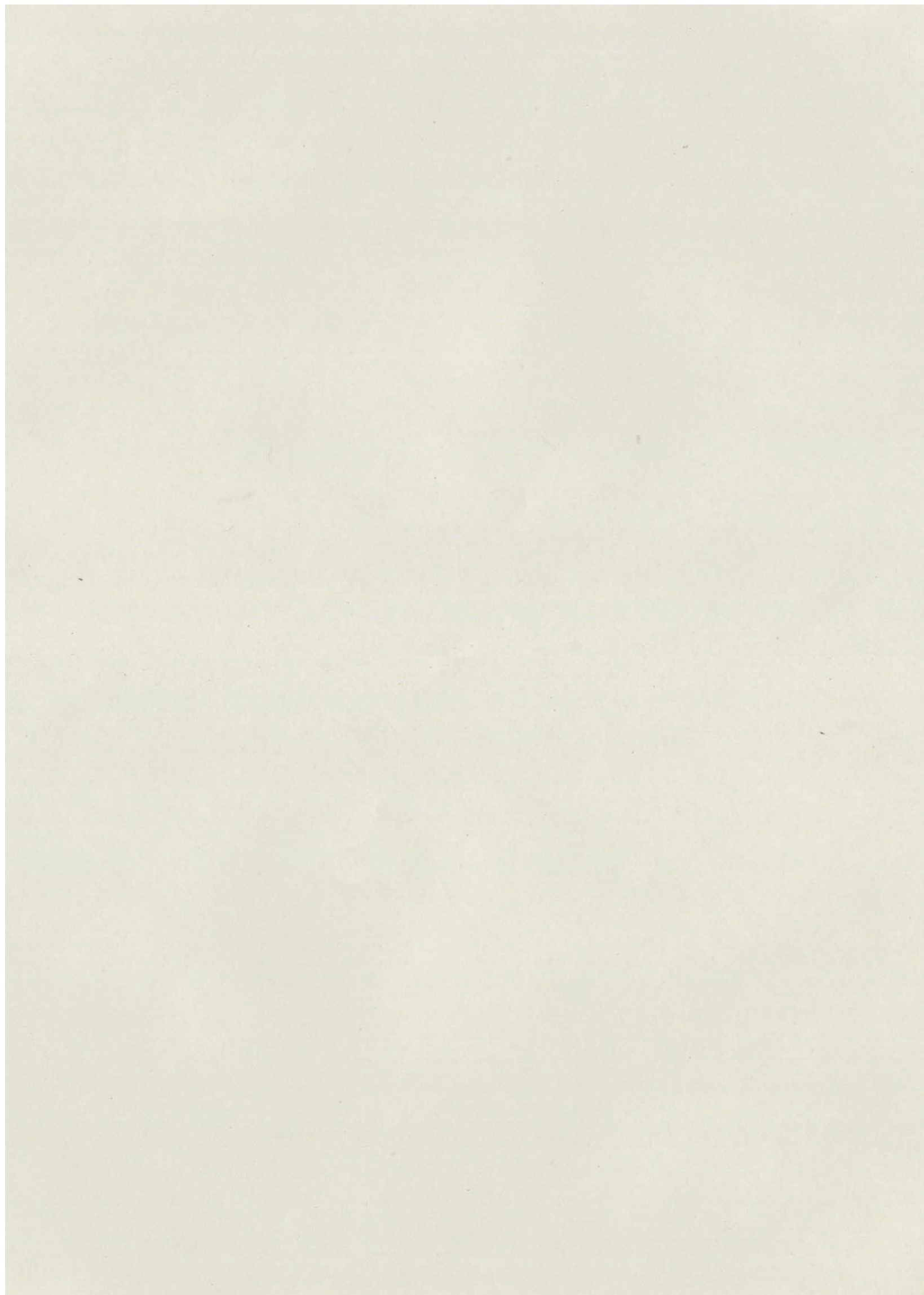
Presented *by* Slingsby,
Slingsby's Journeyfolk and the Council of Companions
19 July - 5 August 2017

EMIL
AND THE

DETECTIVES

By Erich Kästner
Adapted for the stage *by* Nicki Bloom





EMIL AND THE DETECTIVES



*“You’re in for some big surprises...
Ever seen buildings 100 stories high?
You will in the city! They fasten the roofs to
the sky so the buildings won’t blow away”*

Photography & Design
- by -
Andy Ellis

theartofandyellis.com

COMPANY

On Stage

Elizabeth Hay *Performer*

Tim Overton *Performer*

Off Stage

Access2Arts *Audio Description*

Amber Venner, **Communication Republic** *Interpreter*

Andy Ellis *Graphic Design, Photography & Video*

Andy Packer *Director*

Andy Petrushevics *Animation Designer*

Angela de Palma *Properties and Scenic*

Brad Thomson *Venue fitout*

Brad Wilson *Venue fitout*

Chris Hill *Carpenter*

Chris Petridis *Technical Design*

Christie Anderson *Choir Director*

Emma Horwood *Choir Conductor*

Geoff Cobham *Lighting Design*

Hannah McCarthy-Oliver *Education Consultant*

Jane Goldney *Copywriter*

Kate Potter *Hughes PR*

Luku Kukuku *Animation Director*

Max Mackenzie *Technician*

Michelle Delaney *Properties and Scenic*

Nemo Frolich *Carpenter*

Nicki Bloom *Playwright*

Peta-Anne Louth *Bespoke, Front of House*

Pip Cody *Interpreter*

Quincy Grant *Composer & Sound Design*

Rebekah Cichero, *One Small Room Foyer Installation*

Roland Partis *Production Manager*

Sascha Budimski *Audio Editing*

Sean Ormsby *Crew*

Simon Hatcher *Hughes PR*

Sophie Edwards *Stage Manager*

Stacey Baldwin *General Manager & Producer*

Stu Nankivell *Lead Animator*

Tom Sutton *Crew*

Van Locker *Venue Manager*

Wendy Todd *Costume Design*

Young Adelaide Voices *Choir*

Musicians

Mitch Berick *Clarinet*

Gareth Chin *Accordion*

Ashley Hribar *Piano*

Jarrad Payne *Percussion*

Dylan Woolcock *Guitar*

Belinda Gehlert *Violin*

Mikey Robertson *Violin*

Ewen Bramble *Cello*

Harley Gray *Double Bass*

Recording Engineers

James Mensforth

Ray Thomas

Our Presenters

Council of Companions

Gillian Mercer

Helen Salkeld

Hilary Miller

Jodi Glass & Adrian Tisato

Michael Tellis

Nicholas Linke

Robert Goldney

Roger Salkeld

Thomas & Katrina Kimber

The Health Hub

The Wunderlust Trust

Journeyfolk

Adele Walker

Andrew Threlfall

Andy Rasheed

Angela Allison

Bob Weatherly

Casandra Francas

Chris Grant

Christine Schloithe

Cynthia Goldsworthy

David Cox

Diana Jaquillard

Eleanor Brasted

Frank Ford

Helen Bennetts

Helen MacLaren

Jane Barwick

Jane Bennett Thompson

Janet Leske

Jen Frith

Jennifer Layther

Jim Morrow

Jim Weiner

Johanna Somfleth

John Grant

Josh Belperio

Kate Jordan-Moore

Kate Prescott

Kay Jamieson

Kaye Weeks

Kristen Doherty

Lis Prosser

Matthew Briggs

Matthew Carey

Melinda Pike

Michele Chigwidden

Mimi Crowe

Neale Starkey

Petra Schulenburg

Rachel Bruerville

Rainer Jozeps

Rebecca Moyle-Croft...

COMPANY

Journeyfolk – *Continued*

Rebecca Podsednik
Rebekah Clarkson
Richard Oliver
Rob Brookman
Robi Watt
Ruth Blythman
Sean Williams
Stacey Boomer and Tamara Wood
Stephen Sheehan
Susan Benham Page
Tony Mack
Vicky Waldren

Board of Directors

Tony Mack *Chair*
Angela Allison *Treasurer*
Nigel Smart *Board Director*
Gillian Mercer *Board Director*
Andy Packer *Board Director*

Slingsby

Andy Packer *Artistic Director*
Stacey Baldwin *General Manager & Producer*
Quincy Grant *Artistic Associate (Composer)*
Geoff Cobham *Artistic Associate (Designer)*
BRM Holdich *Accountants*

With Thanks

Adrian Tisato - GT Legal, Andre's Cucina, Audrey Mason-Hyde, Bickfords, Beautiful Donors, BRM Holdich, Chris Hill, James Sweeney & Malones Transport, Jane, Charlie, Jasper & Clem, Jasmine, Emma & Jamie - Temple Christian College, Jodi Glass, Lily Locker, Lush Lighting, Nic, Sophie and Miho, One Small Room, Otto's, Peta - Bespoke, Rachael - Frewville Bakery, Rundle Mall Management Authority, S.C. Pannel Wines, Sam McMahon, Shaun Nelson, Helen Buvinic & Winnie Ling - CBRE, Starhill, Stephanie Fisher, Taren and Adam at Adelaide Festival, Young Adelaide Voices.

A big thank you to **Windmill Theatre Co** for rehearsal room support.

“What makes
a town a town?
What makes it
home?”



DIRECTORS NOTES

Slingsby is particularly interested in bringing ‘coming of age’ or ‘getting of wisdom’ stories to the stage. These stories have the power of being immediately relatable to our multigenerational audience as well as being philosophical enough to be open to infinite interpretation.

When I read Erich Kästner’s *Emil and the Detectives* I was excited by the way Kästner presents a world filled with good people and flawed people. Even though this is a story for children he is presenting a complex world where happiness and sadness coexist. This resonates with Slingsby’s storytelling style: to show that there is darkness in the world, but this serves to make the light moments even brighter and more wonderful.

With this production we’ve built on the ‘world worn’ aesthetic of Slingsby’s previous work. The aesthetic is of no particular time in history but perhaps is most inspired by the 1930s-1950s, along with more contemporary references. These are stories for all times.

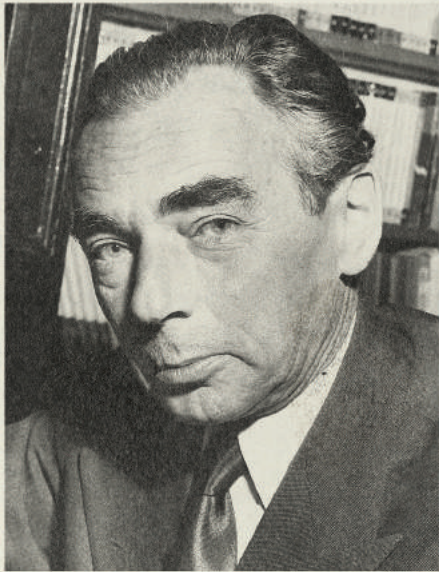
I wanted to make a show that largely existed in a void but also had moments of exquisite detail, much like in Kästner’s book, where there are pages of text and then the odd illustration. We are also inspired by silent movies. We’ve mixed together beautiful spoken word with sections where the audience is observing and interpreting actions alone.

Theatre is a compressed moment in time. For us to really engage with a story it must in some way address an anxiety deep within us. This is why coming of age stories are so potent for us. As humans we are constantly evolving into a new phase of our lives.

From Nicki Bloom’s script I love the provocation “What makes a town a town? What makes it home?” This is such a simple but powerful question for us to consider in a world that seems to want to divide and separate us. This line also speaks to the collective experience that I want our theatre to provide. To remind us that we’re in this together. We just need more opportunities to recognise the potential in people around us.



ABOUT ERICH KÄSTNER



Eric Kastner was born on the 23rd February 1899 in Dresden Germany. He was a novelist, satirist and poet. He studied to become a teacher and journalist. Kastner's children's books are famous for their sense of humour and respect for children.

Emil and the Detectives is his most popular story and has been translated into over 59 languages. It was his only book to avoid Nazi censorship. Kastner printed many of his works in Switzerland because of this issue.

After World War II, Kastner edited the magazine *Die Neue Zeitung* of Munich and also created a children's newspaper. From 1952 to 1962 he undertook the role of president for the German branch of P.E.N., an organisation of international writers.

He died in Munich, West Germany on the 29th July 1974 aged 75.

'If all the kings and all their armies
Send us far away, Then in the world we'll
put our trust And take whatever comes our
way. So blessings and a faithful heart,
to dream by'.

ABOUT THE ARTISTS

Ailsa Paterson - *Costume Design*

Ailsa completed the Bachelor of Dramatic Art in Design (NIDA) in 2003.

Design credits for State Theatre Compoany of SA include *A Doll's House*, *The 39 Steps*, *Things I Know to Be True*, *Betrayal*, *Beckett Triptych*, *The Importance of Being Earnest*, *Hedda Gabler*, *In the Next Room or The Vibrator Play*, *War Mother*, *The Ham Funeral*, *The Complete Works of William Shakespeare (Abridged)*, *The Price*, *The Cripple of Inishmaan*, *Little Bird*, *The Seagull* and *Three Sisters*. Design credits for Slingsby include *Ode to Nonsense* and *Mouse, Bird and Sausage*. Designs for Patch include *Cranky Bear* and *Yo Diddle Diddle*. Ailsa was Costume Designer for Cloudstreet (State Opera of SA.)

Ailsa received the 2011 Mike Walsh Fellowship.

Andy Ellis - *Graphic Design, Photography*

Andy is a husband, father and a multi-disciplinary creative crafting beautiful, unique & thoughtful work out of his 100+ year old art & design studio, nestled amongst the vineyards in the sleepy village of Greenock in the Barossa Valley, South Australia.

Andy has over 15 years experience creating award winning illustrations, photography, design and films for both national and international clients. When not enjoying the spoils of the Barossa, together with his wife & son he spends his time in the mountains surrounding Fukuoka, Japan, which is also a place he calls home.

Andy has worked with Slingsby since their inception in 2007 creating a visual language by way of graphic design, illustration, photography and video for all Slingsby shows.



Andy Packer - *Director*

Since completing a BA of Theatre Studies at Adelaide University in 1992, Andy's arts career has encompassed many roles including Creative Producer, ensemble Actor/Creator and Festival Director. In 2007 Andy co-founded Slingsby Theatre Company as Artistic Director. In ten years Slingsby has toured its original productions to 70 venues in 44 cities and towns across Australia, New Zealand, Singapore, USA, Canada, UK, Scotland, Spain, Ireland and Norway, winning 14 industry awards along the way. Alongside Slingsby, Andy has built a freelance career as a Director of opera, musical theatre, cabaret and concerts. Most recently Andy directed *Vigil*, written by Steve Vizard and Joe Chindamo and starring Christie Whelan-Browne for Adelaide Cabaret Festival 2017 (4.5 stars, *Limelight*).

Andy has Directed for State Theatre Company of South Australia, Adelaide Symphony Orchestra, State Opera of South Australia, Adelaide Fringe, Adelaide Festival of Arts and Adelaide Chamber Singers. Andy is respected nationally and internationally for creating moments of human intimacy and emotional truth in both intimate one hander productions and in large operatic and orchestral scale works, for child, family and adult audiences. In January 2016 Andy became the first Australian to join the Board of Management of Philadelphia-based IPAY (International Performing Arts for Youth).

Andy and his wife Jane love living in Adelaide with their three school-age sons and retired greyhound.

ABOUT THE ARTISTS



Chris Petridis - *Technical Design*

Chris is a lighting and video designer from Adelaide. Following his completion of the Technical Production course at the Adelaide Centre of the Arts, Chris has continued to develop his experience across theatre, dance, and other live events in Australia and internationally.

Chris has worked with State Theatre Company of South Australia on *Mr Burns*, *Red Cross Letters*, *Eh Joe for the Beckett Tryptych*, *Gorgon*, *Masquerade*, *The Kreutzer Sonata*, *Maggie Stone* and *Little Bird*. Chris has completed designs for Brink Productions' *Long Tan*, *Tiny Bricks' Deluge*. Australian Dance Theatre's *The Beginning of Nature Part 1* and *Ignition 2016*. Restless Dance Theatre's *Touched*. Slingsby Theatre Company's *The Mouse*, *The Bird* and *The Sausage*. Windmill Theatre Company's *Grug and the Rainbow*, *Big Bad Wolf* and *Story Thieves*. Vitalstatistix' *Quiet Faith*, *Someone like U's Bitch Boxer*. Torque Show's *MALMÖ*, The Border Project's *Half Real*, *Ludwig's Fleck and Flecker*, *five.point.one's Muff* and a multimedia performance project for Country Arts SA called *If There Was A Colour Darker Than Black I'd Wear It*. Chris has also worked in association with Geoff Cobham on a number of projects including creating the visual aesthetic for Force Majeure's *Never Did Me Any Harm* using light and video. Chris will continue to explore the synthesis of light and video wherever possible.



Elizabeth Hay - *Performer*

Elizabeth has been living and working in Adelaide since graduating from the Flinders Drama Centre in 2010. Most recently, Elizabeth was a deviser and performer for *Stories in the Dark*, which won the InSpace Development Award at this year's Adelaide Fringe.

Elizabeth has performed with the State Theatre Company of South Australia in new Australian work *Jesikah*, *Volpone*, and *Red Cross Letters*. She has been involved as a performer with many local independent theatre companies, such as five.point.one in *The Last Time I Saw Richard*, and ActNow Theatre in *Speak Out*. Elizabeth joined the main cast of *Danger 5* for the series return on SBS, and has appeared in many commercials and locally made television productions. Elizabeth has served on the National Performer's Committee for MEAA for the past few years, and has recently been made President of the South Australian branch of Equity.

“Are you going to believe me or a child?”

ABOUT THE ARTISTS



Geoff Cobham - *Lighting Design*

Geoff has worked as an Event Producer, Production Manager, Lighting Designer, Set Designer, Public Artist and Venue Designer. His work has ranged from many smaller innovative productions at the; Performance Space, Queens Theatre, Belvoir Street, Red Shed and non theatre venues (tents, warehouses, etc) to large scale theatre/dance productions, festivals, art exhibitions, events, museums and venue creation.

Awards include: Ruby Award for *Sustained Contribution*, Green Room Award Best lighting Design for *Night Letters* (State Theatre Company of South Australia), Sydney Theatre Award Best Lighting Design for *Never Did Me Any Harm* (Force Majeure), Helpman Award for Best Scenic Design for *Little Bird* (State Theatre Company of South Australia). Geoff is Artistic Associate (Design) for Slingsby.

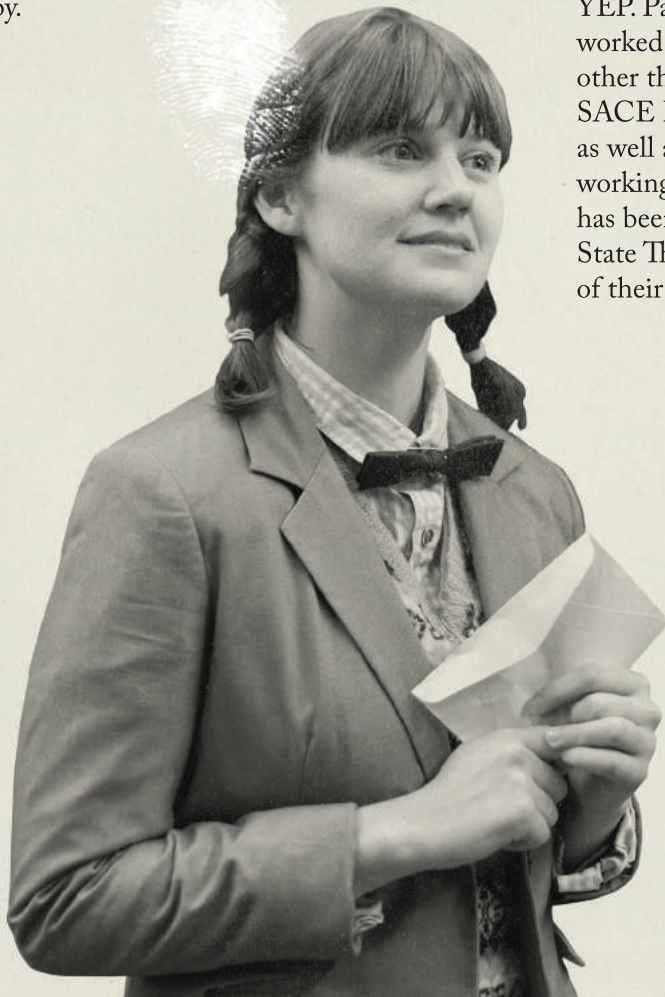


Hannah McCarthy-Oliver

- *Education Consultant*

In the year of her 4th birthday, Hannah's stage career began as a soloist in her church's Christmas play. As an adult she received a Bachelor in Educational Theatre and a Graduate Diploma in Education at Adelaide University. Hannah has been teaching Drama for 19+ years and directed approximately 50 productions.

She's currently the Head of Drama at St Mary's College. Hannah has also delivered the Certificate II in Live Production Theatre and Events course. Away from teaching Hannah was the Assistant Director on the State Theatre's production of *The Cripple of Inishmaan*. She has been involved with eight Fringe Festivals in numerous roles including Publicity and YEP. Participating in on and offstage roles, Hannah worked with the University Theatre Guild and many other theatre companies. She is a member of the SACE Drama Curriculum Leaders Advisory Group as well as a Drama Moderator and Marker. Since working with Slingsby on *The Young King*, Hannah has been engaged by a number of companies such as State Theatre and Brink Productions to create some of their Education Materials and Study Guides.



ABOUT THE ARTISTS

Luku Kukuku - *Animation Director*

Luku Kukuku is a multidisciplinary multimedia guru, well known for his specialities of Art, Design, Animation, Digital Media, Interactivity and Sound Responsive Multimedia. For over a decade, Luku has been using this varied palette of skills to forge an expanding and award winning career in the Australian art landscape. Making work which transcends the limitations of the screen is Luku's forte. Along with a celebrated artistic career steeped in vivid daubist paintings and exuberant exhibition curation, Luku's multimedia expertise now often manifests in the form of large scale mapped projections, animations, motion graphics, sound responsive light shows, motion controlled interactive spectacles, all topped with a healthy dollop of twisted, colourful madness. Luku has made a wide variety of multimedia work for festivals, television, theatre and live music, as well as museums and businesses throughout Australia.



Nicki Bloom - *Playwright*

Nicki is an Adelaide-based writer. Her plays have been produced throughout Australia and internationally, and have won multiple awards.

Her plays include *Tender*, *Bloodwood*, *The Sun and the Other Stars*, *Land & Sea*, *A Cathedral*, *Little Bird* and *Vale*. Awards include the Adrian Consett Stephen Memorial Prize and the 2007 Inscription Chairman's Award (*Tender*); the 2008 Patrick White Playwrights' Award and the 2009 Inscription Playwriting Award (*Bloodwood*); the 2012 Barbara Hanrahan Fellowship and the 2012 Patrick White Playwrights' Award (*The Sun and the Other Stars*); the 2012 Jill Blewett Award (*A Cathedral*) and the 2015 AWGIE for Best Writing for Music Theatre (*Little Bird*).

She has also worked as an adaptor, creating new versions of Ibsen's *Ghosts*, Shakespeare's *Romeo and Juliet* and Oscar Wilde's *The Young King*. She has been twice nominated for Helpmann awards, in 2015 (Best New Australian Work, *Little Bird*) and 2016 (Best Production Children's Theatre, *The Young King*).

Her plays are published by Currency Press and Phoenix Educational Press.



ABOUT THE ARTISTS

Mark Oakley - *Technician*

Mark is 6"5" and is not English. Mark has a wide range of experience in the AV industry, including working with various companies, most prominently Mosaic AV. His work with Mosaic enables to be involved with many theatrical, corporate and concert style shows, with standouts being *'Tommy'* (2015), *'Otello'* (2016). Mark has also spent several years working at Co Opera, and toured several successful shows interstate (*'Madame Butterfly'* (2014), *'Cosi Fan Tutti'* (2015), *'The Magic Flute'* (2015)). Other independent highlights include designing for The Gilbert and Sullivan society (*'The Sound of Music'* (2014), *'Guys and Dolls'* (2015)), and the South Australian premiere of *'Legally Blonde'* (2014) for the Hills Musical Society.

Mark graduated from Brighton Secondary School in 2011, and has since kept in contact with the Performing Arts Centre, becoming a resident house tech. Through his connections at the school he was a founding member and resident tech for Reverb Theatre group (*'Nightfall with Edgar Allen Poe'* (2013), *'Peter Pan'* (2014), and *'A Midsummer Nights Dream'* (2015)) and has also has formed an association with the schools external dance program, Lift Dance Theatre (*'Carapace'* (2015-16)).

Peta-Anne Louth - *Bespoke Front of House*

Bespoke is a South Australian company specialising in perfectly tailored staffing solutions. Founded in 2011, Bespoke provides its trademark "staff with personality" for the full breadth of special events in the state, and includes amongst its clients Adelaide Festival, Cabaret Festival, Adelaide Fringe, Feast Festival; major tourism events such as Tasting Australia, and Tour Down Under, and performance spaces such as Norwood Concert Hall.

Under the direction of Peta-Anne Louth, Bespoke provides second-to-none front of house solutions for theatrical and major events as well as food and beverage teams that are recognised as the best in the business.

Bespoke is proud of its collaborations with outstanding South Australians, and is honoured to help industry legends such as Simon Bryant, the Beer Family, and Slingsby in delivering unique and memorable experiences to their audiences.



Quincy Grant - *Composer & Sound Design*

Quincy composes music for theatre, concert stage and film. His work includes music for plays such as *The Tragical Life of Cheeseboy*, and *When the Rain Stops Falling*; many works for orchestra that have been played in Germany, Canada, and by the leading Australian orchestras; and soundtracks for films and documentaries broadcast on the ABC and SBS. He also writes for concert performances and film, and plays in many groups: from rock to new music and, most recently wild gypsy music with Golonka.

He is co-director of The Firm, a company that presents concerts each year featuring Australian classical musicians in programmes of new Australian music along side interesting repertoire. In 2013 his first opera, *An Ode to Nonsense*, was premiered by Slingsby and the State Opera of South Australia.

This is the seventh wonderful show he has done with Slingsby!

Quincy lives in Adelaide with four dear ones – Anna, Arland, Clara and Miranda.

ABOUT THE ARTISTS



Roland Partis - *Production Manager*

Roland has worked with Slingsby since 2007, and has been fortunate to tour extensively around Australia and internationally with their inaugural production, *The Tragical Life of Cheeseboy*.

Roland's other work as a technician, stage manager, site manager and production coordinator includes *The Mouse, The Bird and The Sausage* and *The Young King* (Slingsby), *The Moon's a Balloon* (Patch), *Les Gumes* (Le Phun/WOMADelaide), Adelaide Writers' Week, Sydney Film Festival, Dark Mofo, and the Darwin Festival.

In 2012 he completed a Diploma in Set Construction, Props Manufacturing and Scenic Art at Adelaide College of the Arts.



Stacey Baldwin - *General Manager & Producer*

Stacey relocated from Melbourne in February 2017 to take on the role of General Manager/Producer for Slingsby. She has worked with leading Victorian arts organisations such as Back to Back Theatre, Melbourne Festival, Insite Arts, Big West and Jodee Mundy Collaborations.

As well as producing projects, Stacey is a self confessed systems nerd, working with organisations to support them through periods of change and implement structures to find better ways of working.



ABOUT THE ARTISTS



Sophie Edwards - *Stage Manager*

Sophie is a Theatre and Media graduate of Charles Sturt University. Having spent a decade working as a Stage Manager for companies including Leigh Warren and Dancers, Brink, Flying Penguin Productions and The State Opera of South Australia, she 'retired' from the theatre to study Natural History Film Making. Here she discovered her love of Sound and enjoys a healthy penchant for field recording and late night musical ramblings. This Slingsby Production of *Emil and The Detectives* is her foray back into the world of theatre, where one day she hopes to compose aural delights.



Tim Overton - *Performer*

Tim is a proud South Australian deviser and performer who graduated from Adelaide College of the Arts in 2008 and is thrilled to be working with Slingsby on their production of *Emil And The Detectives*.

Last year Tim first joined Slingsby with their award winning production of *The Young King* that will go on to tour nationally and internationally over the next few years, including The Sydney Opera House and New York City's New Victory Theatre.

Tim has also performed numerous times locally and across Australia with theatre companies, Vitalstatistix (*Life Is Short And Long*), State Theatre Company of South Australia (*Summer Of The Seventeenth Doll*, *The Popular Mechanicals*, *The 39 Steps*), Patch Theatre Company (*Mr McGee And The Biting Flea*, *Me And My Shadow*, *Cranky Bear*) and Junglebean, an independent theatre company he co-founded (*Boxing Day Test*, *The Call*).



ABOUT THE ARTISTS



Van Locker - *Venue Manager*

Van has worked full time in the performing arts since graduating Toi Whakaari: New Zealand Drama School in 1999. Working primarily as a Production Manager in small to medium companies in New Zealand and Australia, his primary focus has been the development and touring of works throughout Australasia, Europe, and North America.

He now lives in the Adelaide Hills with his family - Stacey, Lily and Dave the dog.



Wendy Todd - *Designer*

Wendy is an Adelaide based designer of theatre, events and spaces. Recent production designs (Set & Costume Design for all productions) include: Nursery 2014, (*Sally Chance Dance*), Babyteeth 2013, Blasted 2012, Pornography 2012 (State Theatre Company of South Australia), *Land & Sea* 2012, *Skip Miller's Hit Songs* 2011, *Harbinger* 2010 (Brink Productions), *Man Covets Bird* 2010, *The Tragical Life of Cheeseboy* 2007 (Slingsby), *Worldhood* 2011 (Australian Dance Theatre), *A Lion In The Night* 2012, *The Little Green Tractor* 2011 (Patch Theatre Company), *Cutaway III*, 2013 & *II*, 2012 (Vitalstatistix), *Ruby Bruise* 2010 (The Misery Children & Vitalstatistix).

Recent event designs: Designer Blink Bar 2015 Adelaide Festival of Arts Precinct, Design Assistant/Coordinator Lola's Pergola 2014, Design Coordinator of Barrio 2013 & 2012, Assistant Designer Persian Garden 2008 & 2006 (Late Night Clubs of the Adelaide Festival of Arts), Event and Gala Designer Adelaide Cabaret Festival 2015, Design Coordinator Adelaide Cabaret Festival 2014 (Adelaide Festival Centre), Bowerbird Design Markets 2014, 2013, 2012.



SLINGSBY

- Journey In Wonder -



CONNECT
with Slingsby

-  SlingsbyTheatre
-  SlingsbyTheatre
-  SlingsbyTheatre
-  Slingsby

Support Slingsby by making a donation
<http://www.slingsby.net.au/support-us/>

Slingsby is supported by the Government of South Australia through Arts SA and the Australia Council for the Arts, the Australian Government's arts funding and advisory body.

slingsby.net.au

The Health Hub is the official health & wellness partner for Slingsby for 2017.

